



## June-July 2012 Update

[www.omahaskiclub.org](http://www.omahaskiclub.org)

### Two Trips Available for Signups So Far, More To Follow

Details have been determined so far for two of the 2012-2013 seasons' trips. The club will be going to Snowmass, Colorado in conjunction with the annual Flatlands Ski Association (FSA) ski week, from January 20<sup>th</sup> to the 27<sup>th</sup>; see page 3 of this newsletter for details. A trip is also planned to North Lake Tahoe from March 2<sup>nd</sup> to the 9<sup>th</sup>; see page 4 for information. Other trips are also being planned; more information about them will be available in September.

**Snowmass FSA trip info**  
page 3

**North Lake Tahoe trip info**  
page 4

**Membership application**  
page 5

**Trip application**  
page 6

### Upcoming Events

#### August 2nd (Thursday) 7 p.m. Omaha Storm Chasers Baseball Game

Let's support the Storm Chasers, Thursday August 2, at Werner Park - north side of Rt 370 between 120th and 126th St. The game starts at 7:05. They're having a "Thirsty Thursday" promotion - beer and soda for \$1. Look for ski club members in general admission. General admission tickets are \$9. Any questions, call El at 402-453-9088.

#### August 7th (Tuesday) 7 p.m. Board Meeting Wohlner's Grocery and Deli, 2287 S 67<sup>th</sup> St

All members welcome.

#### August 16th (Thursday) 7 p.m. Jazz on the Green Turner Park, midtown Omaha

Featured entertainment: Joseph Vincelli contemporary jazz quartet. The concert starts at 7 p.m. This is a free outside concert. Wear a ski club shirt. We will be on the right hand side facing the stage. Bring chairs, your food or beverage or purchase it on site. See you there. Everyone welcome.

### BOARD OF DIRECTORS

#### PRESIDENT

Phil Bintz

(402) 483-2668(H)

[president@omahaskiclub.org](mailto:president@omahaskiclub.org)

#### VICE PRESIDENT TRIPS

Teri Hammon

(402) 571-4517(H)

[vp-trips@omahaskiclub.org](mailto:vp-trips@omahaskiclub.org)

#### VICE PRESIDENT ACTIVITIES

El Siebert

(402) 453-9088(H)

[vp-activities@omahaskiclub.org](mailto:vp-activities@omahaskiclub.org)

#### SECRETARY

Ben Novograd

(402) 291-5704(H)

[secretary@omahaskiclub.org](mailto:secretary@omahaskiclub.org)

#### TREASURER

Dave Burden

(712) 527-5980(H)

[treasurer@omahaskiclub.org](mailto:treasurer@omahaskiclub.org)

**August 19th (Sunday) 7:45 a.m.**

**Corporate Cycling Challenge  
Heartland of America Park**

Last year, a group from the Omaha Ski Club participated in the annual Corporate Cycling Challenge. We'll be participating again this year.

We'll be entering on an individual basis in the Open division.

The Corporate Cycling Challenge is Nebraska's largest one day bicycling event. Normally, several thousand riders participate. It starts and ends at the Heartland of America Park (8th and Farnam St) in downtown Omaha.

Three different ride lengths are available - 42 miles, 25 miles and 10 miles. The 42 mile ride is a challenging, hilly adventure from Omaha to Fort Calhoun and back, which starts at 8 a.m. and which most participants finish around 11 or 11:30. The 25 mile ride is from Omaha to the Forest Lawn Cemetery and back; some hills, but easier; it starts at 8:30 a.m. Most riders get this done in about two or two and a half hours. The 10 mile ride is an easy, flat ride around Carter Lake and the Omaha riverside which can be done in an hour or less; it starts at 9 a.m. Registration for all of these rides is \$20 before July 27, \$25 afterwards. Proceeds from the ride benefit the Eastern Nebraska Trails Network. To register by mail, use the form at

[http://corporatecycling.com/Individual\\_Brochure.pdf](http://corporatecycling.com/Individual_Brochure.pdf), or register at the starting area on the day of the ride. Further details about the ride can be found at <http://corporatecycling.com>.

Our riding group will meet on the southwest corner of 11th & Farnam at 7:45 a.m., and then head down to the starting area shortly before 8 a.m.

**August 26th (Sunday) 7:30 a.m.**

**Heatstroke 100 Bike Ride  
Strategic Air and Space Museum**

Last year, a group from the Omaha Ski Club participated in the annual Heatstroke 100 century ride. We'll be participating again this year. This ride has many shorter ride lengths available; the ride lengths for people to participate in range from 24 to 108 miles. The ride is sponsored by the Great Plains Bicycling Club, from Lincoln. Last year, several hundred riders participated. It starts and ends at the Strategic Air and Space Museum, next to Mahoney State Park, 1/2 mile west off exit 426 of Interstate 80.

All the ride lengths start at 7:30 a.m. on Sunday, August 26.

Registration is \$20 before August 1, \$25 afterwards. Registration can be done by mail or on the morning of the ride at the starting area.

Ride website: <http://greatplainsbikeclub.org/heatstroke/>

**September 4th (Tuesday) 7 p.m.**

**Board Meeting  
Wohlner's Grocery and Deli, 2287 S 67<sup>th</sup> St**

All members welcome.

**New and Renewal Members**

The Omaha Ski Club welcomes the following new and renewal members:

Donald Hopp  
Mark Storz

**COMMITTEES**

**MEMBERSHIP**

Mary Soar

(402) 515-1686(H)

[membership@omahaskiclub.org](mailto:membership@omahaskiclub.org)

**NEWSLETTER**

Ben Novograd (H)

(402)291-5704

[newsletter@omahaskiclub.org](mailto:newsletter@omahaskiclub.org)

**RACE**

Teri Hammon

(402) 571-4517(H)

[race@omahaskiclub.org](mailto:race@omahaskiclub.org)

**FLATLAND SKI ASSOC. Rep.**

Ben Novograd

(402) 291-5704(H)

[fsa-director@omahaskiclub.org](mailto:fsa-director@omahaskiclub.org)

**PUBLIC RELATIONS**

Teri Hammon

(402) 571-4517(H)

[marketing@omahaskiclub.org](mailto:marketing@omahaskiclub.org)

**LEGAL**

Dave Lawler

(712) 328-9278(H)

(712) 323-4132(W)

[legal@omahaskiclub.org](mailto:legal@omahaskiclub.org)

**WEBSITE**

Ben Novograd

(402) 291-5704(H)

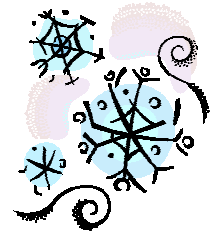
[webadmin@omahaskiclub.org](mailto:webadmin@omahaskiclub.org)



# Snowmass CO

## January 20-27, 2013

Drive-out trip



Join the Omaha Ski Club on the annual Flatlands Ski Association (FSA) trip. We will be staying at the beautifully remodeled, ski-in/ski-out Crestwood Condos for the entire week.

### Trip includes:

- 7 nights lodging at the Crestwood condos 1BR + loft/2 bath, or 2 BR/2 Bath condos (king or queen/2-3 twins per condo) concierge service, daily housekeeping, luggage assistance, grocery & liquor shopping free parking, free internet, complimentary laundry facilities) All services are included with the price of your condo and are covered by the service charge that is paid. The Crestwood has a NO TIPPING policy. Tips are already included.
- FSA Welcome Party
- Ski racing if you wish to participate for the club
- Awards Banquet
- Lift tickets-4 day included in the price of the trip (if you wish to purchase additional days, add the difference to the price of the trip. If you want less than 4 days, subtract the difference. If not skiing, subtract \$213 from the price of the trip)  
(These lift tickets are interchangeable for skiing at Aspen, Aspen Highlands, Buttermilk or Snowmass)(1 day=\$59, 2 day=\$113, 3 day=\$167, 4 day=\$213, 5 day=\$260, 6 day=\$311, 7 day=\$362. All lift tickets have a \$5 RF deposit which can be refunded. YOU have to visit any ticket office for your refund AFTER you have finished your last day of skiing for the week)  
Senior (over 70) price TBA (ask your trip captain prior to final payment)
- Activity ticket for all FSA activities
- Mountain picnic included with the price of the trip
- Tee shirt-optional cost

#### Payment Schedule:

September 23, 2012	\$200
October 23, 2012	\$250
November 23, 2012	\$350
December 23, 2012	\$295 + any additional lift days

Make checks payable to Omaha Ski Club  
P.O. Box 3104  
Omaha, NE 68103-0104

Price: \$1095 (final price subject to change)

Trip Captain: Dave Burden (712) 527-5980 home, (712) 527-0740 cell

Email: [dbburd@mchsi.com](mailto:dbburd@mchsi.com) [dbburd61@gmail.com](mailto:dbburd61@gmail.com)





# North Lake Tahoe Adventure March 2-9, 2013



**Fly-out trip**

Join the Omaha Ski Club for a fun adventure to North Lake Tahoe. Enjoy beautiful views of the lake from the Cal Neva Resort. We have arranged a different ski area each day. This trip includes five days of lift tickets, all transfers, airfare, lodging and parties. The 6<sup>th</sup> day lift-ticket is optional.

- 7 nights lodging at the Cal Neva Resort (double occupancy hotel style lodging)
- Round trip airfare from Omaha NE (airline TBA)
- Round trip charter bus from Reno to Cal Neva
- Transportation to and from (AS A GROUP) to a different ski resort each day
- Five days of skiing:
  - March 3-Squaw Valley
  - March 4-Alpine Meadows
  - March 5-Homewood
  - March 6-DAY OFF or OPTIONAL day at Diamond Peak (additional \$38+ TBA)
  - March 7-Sugar Bowl
  - March 8-Mt Rose

- Welcome reception
- 15% off breakfast in the Lake View dining room
- Farewell Dinner Party on Friday TBA
- Trip insurance (optional) \*\*\*

**Payment Schedule:**

September 23, 2012	\$200 + trip ins (optional)
October 23, 2012	\$250
November 23, 2012	\$250
December 23, 2012	\$300
January 23, 2013	\$390

Make checks payable to Omaha Ski Club  
P.O. Box 3104  
Omaha, NE 68103-0104



**Price: \$1390** (final price subject to change)

**Trip Captain: Teri Hammon (402)571-4517**  
home, (402)680-0971 cell

Email: [dragonsrock@cox.net](mailto:dragonsrock@cox.net)

**Cornhusker Liaisons: Steve and Patsy Meyer (402) 423-6614**

Email: [blueskies@inebraska.com](mailto:blueskies@inebraska.com)

\*\*\*Please note: If you want trip insurance, you must fill out the form at the time of sign-up. Obtain a form from your trip captain

**OMAHA SKI CLUB MEMBERSHIP APPLICATION  
JUNE 2012 – MAY 2013**

MEMBERSHIP STATUS:      NEW \_\_\_\_      RENEWAL \_\_\_\_  
Through September 30, 2012:      FAMILY \$25 \_\_\_\_      SINGLE \$22 \_\_\_\_  
After September 30, 2012:      FAMILY \$30 \_\_\_\_      SINGLE \$27 \_\_\_\_

**MEMBER INFORMATION - - - PLEASE PRINT CLEARLY**

Name: \_\_\_\_\_ Spouse: \_\_\_\_\_

Street Address: \_\_\_\_\_ City: \_\_\_\_\_ State: \_\_\_\_ Zip: \_\_\_\_\_

Home Phone: (\_\_\_\_) \_\_\_\_\_ Alternate Phone: (\_\_\_\_) \_\_\_\_\_

Email Address: \_\_\_\_\_

Check this box  if you are 21 years or older.      For family membership, list all dependent minors on back of application.

If new member, how did you hear about the club? \_\_\_\_\_

Ski/Snowboard destinations you're interested in: \_\_\_\_\_

Activities you're interested in: Biking \_\_\_\_ Bowling \_\_\_\_ Dinners \_\_\_\_ Other \_\_\_\_\_  
(please list)

Other Interests: (please list) \_\_\_\_\_

**NOTE:** BY SIGNING THIS APPLICATION I RELIEVE THE OMAHA SKI CLUB, INC. (OSC) OF ANY RESPONSIBILITY FOR ACCIDENT OR INJURY I INCUR WHILE PARTICIPATING IN ANY OSC ACTIVITIES. I ALSO CERTIFY THAT I AM OF LEGAL DRINKING AGE IN THE STATE OF NEBRASKA.

**SIGNATURE** \_\_\_\_\_ **DATE** \_\_\_\_\_  
(Must be signed and dated)

[OSC USE ONLY]      MEMBERSHIP NO. \_\_\_\_\_ BD. \_\_\_\_\_ TR. \_\_\_\_\_ NL. \_\_\_\_\_

Mail to: Omaha Ski Club, P.O. Box 3104, Omaha, NE 68103-0104



# TRIP APPLICATION

(Required for each individual on the trip) (PLEASE PRINT LEGIBLY)

Trip Destination \_\_\_\_\_ Trip Dates \_\_\_\_\_

FIRST NAME \_\_\_\_\_ M.I. \_\_\_\_\_ LAST NAME \_\_\_\_\_ DATE OF BIRTH \_\_\_\_\_ SEX \_\_\_\_\_

ADDRESS \_\_\_\_\_

CITY \_\_\_\_\_ STATE \_\_\_\_\_ ZIP CODE \_\_\_\_\_

HOME PH. \_\_\_\_\_ WORK PH. \_\_\_\_\_

E-MAIL \_\_\_\_\_ CELL PH. \_\_\_\_\_

### EMERGENCY CONTACT:

Name \_\_\_\_\_ Relationship \_\_\_\_\_ Phone \_\_\_\_\_

I Prefer to Room With \_\_\_\_\_ OTHER INFO \_\_\_\_\_

### THE OMAHA SKI CLUB MEMBER SIGNING THIS APPLICATION AGREES AS FOLLOWS:

The member has read the OSC trip policies on the bottom of this application and understands and agrees to be bound by them as a condition of participation in this trip. The member further agrees that the club, its directors or committee chairmen shall bear no financial responsibility to members in the event of a delayed departure or return of a trip, or for cancellation of a trip except as provided in items 7 through 10 of the trip policies, nor shall they be liable for any bodily injury, property damage, loss of personal property, or death sustained by or caused by any member on a trip. Those individuals causing property damage at the lodges, condos, busses, ski areas, etc. shall bear the full legal and financial responsibility for the damages. It is a condition of membership in the club that any individual shall be deemed to have accepted these responsibilities and limitations of liability as a consideration of joining the club and participating in this trip.

SIGNATURE \_\_\_\_\_ DATE \_\_\_\_\_

[osc use only] deposit: amount paid \_\_\_\_\_ date \_\_\_\_\_ ck or rcpt no \_\_\_\_\_

### OMAHA SKI CLUB TRIP POLICIES

- 1) Trip captain is the final authority on and during the trip.
- 2) Club members will conduct themselves in a mature manner at all times.
- 3) There will be a \$28.00 charge on any returned check.

### TRIP SIGN-UP, DEPOSITS AND PAYMENTS

- 4) Only members in good standing with dues currently paid to the Omaha Ski Club may sign up for a trip. Children under the age of 19 must be accompanied by a parent or guardian on the trip. A trip application for a child under the age of 19 must be signed by a parent or guardian of the child.
- 5) By signing up for a trip a member agrees to pay the Club the full cost of the trip applied for, subject to the provisions for timely cancellation in item 7). Each trip will have its own trip deposit and payment schedule to be set by the trip committee. A deposit is required to sign up for a trip. Failure to meet the payment schedule may result in automatic cancellation from the trip subject to the cancellation fee in item 7).
- 6) When a trip is full the trip captain will start a waiting list. To be placed on the waiting list a member must fill out and sign a trip application and pay the standard deposit for that trip. Waiting list members must meet the payment schedules when moving to the confirmed lists.

### CANCELLATIONS AND REFUNDS

- 7) Unless otherwise listed in individual trip information, cancellations prior to 60 days before the trip departs will result in a cancellation fee of \$50.00; cancellations less than 60 days before the trip departs will result in a cancellation fee of \$100.00 if the trip goes full, or liability for the full cost of the trip if the trip does not go full. Any cancellation fees or penalties may first be deducted from payments the member made for the trip.
- 8) Transferring from the waiting list on one trip to a confirmed list on another trip will be done with no cancellation fee. Refusal to move from the waiting list to the confirmed list will constitute automatic cancellation subject to the cancellation fee in item 7) above.
- 9) If a trip is cancelled by the club, all money paid to the club by a member for that trip will be refunded.
- 10) All members on the waiting list when the trip departs will receive a full refund.
- 11) No refunds will be made until after the trip returns.

### BUS TRIPS

- 12) Smoking on buses is prohibited.
- 13) Any time the bus stops en route to its destination, passengers leaving the bus will do so at their own risk.
- 14) The Omaha Ski Club will not provide alcoholic beverages for any bus trip. If any members wish to consume alcoholic beverages on the trip, they can do so at their own expense, and assume all risks and liabilities associated with such consumption.